

**SIMTEK**

# MONOMODULAR.

**simmill9W**  
SIMTEK milling tools type 9W

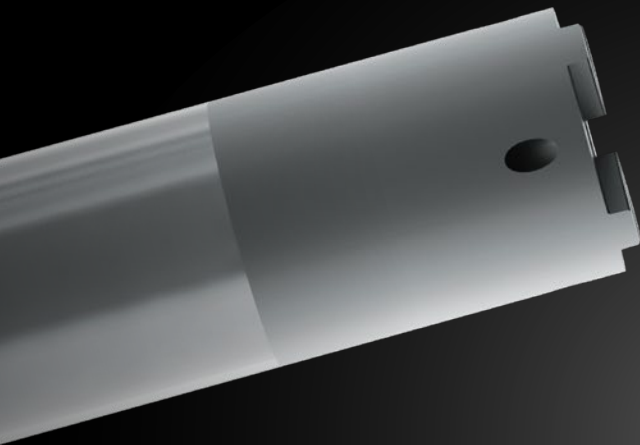
Modular meets  
monoblock.



# REVSYS.

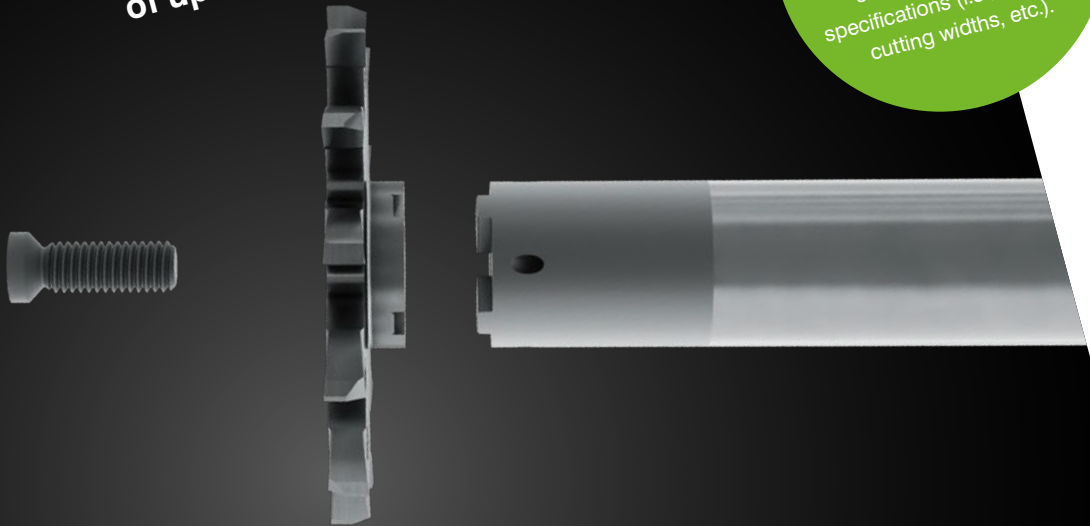
Revolutionary  
meets systematic.

**simmill9W**



Our revolutionary system brings together the best of both worlds. It combines the advantages of a monoblock tool with the cost-effectiveness of a modular tooling system. This means maximum stability and precision – with complete flexibility.

**Discover simmill 9W, the heavy-duty system**  
**with up to 12 cutting edges for groove, slot,**  
**and parting off milling with milling depths**  
**of up to 16.5 mm!**

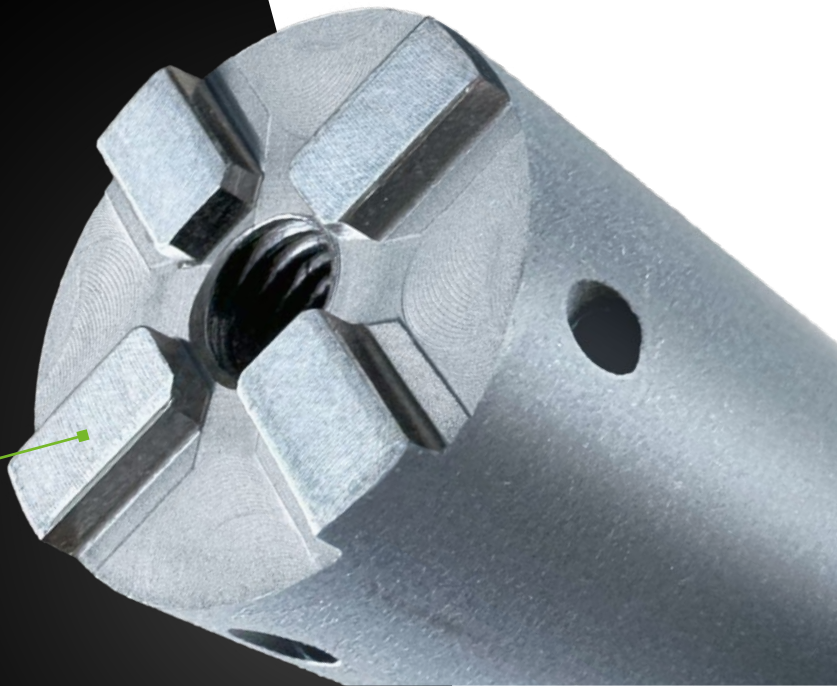


The technical specifications apply to the standard range. Additionally, we can also offer customized solutions with other specifications (i.e., diameter, cutting widths, etc.).

# STABLE EFFICIENT.

Stability meets  
efficiency.

**simmill9W**



# **Unparalleled performance and maximum efficiency.**

The high-performance tothing optimizes power transmission at high torques and ensures a long service life with maximum flexibility.



# PRECISE EASY.

Precision meets  
ease of use.

simmill9W



# Extremely precise and easy to use.

The simmill 9W tooling system offers extraordinary precision with exceptional ease of use. The outstanding concentric and axial runout enables precise cuts, while the high-performance tooling ensures easy handling and optimal power transmission.

## Milling depth

up to **16.5 mm**

Up to  
**12 teeth**

straight or  
crosscut

## Cutting widths

from **0.5 mm** to **6.0 mm**



Precision-ground  
**high-performance  
tooling**

for maximum  
torque transmission

### Please note:

Technical specifications apply to the standard range. Further customized versions also available.

# Benefits:



## Heavy-Duty

Thanks to the high-performance tooling's extremely tight manufacturing tolerances, the simmill 9W tool system stands out with an extremely long tool holder service life.



## High-Precision

The simmill 9W tool system offers outstanding concentric and axial runout properties for precise machining.



## Cost-Effective

The simmill 9W tool system, consisting of a holder and a milling insert, features a modular design that allows worn milling inserts to be easily replaced or reground.



## Stable

The precision-ground high-performance tooling enables optimal power transmission to the milling insert and is therefore suitable for machining with extremely high torques.



# CONNECTIVE.

**Contact meets effectiveness.**

## **Contact us!**

Let's discuss how you can maximize your individual effective potential with simmill 9W.

**Schedule an appointment with us today – we look forward to speaking with you!**



Further information can also be found at [www.simtek.com/simmill9W](http://www.simtek.com/simmill9W)

SIMTEK Präzisionswerkzeuge GmbH  
Christophstr. 18  
72116 Mössingen

Phone: +49-7473-9517-0  
Fax: +49-7473-9517-77  
Email: [info@simtek.com](mailto:info@simtek.com)

[www.simtek.com](http://www.simtek.com)

